

VERBEEK

PROEF DE TECHNIEK



Easy delivery system

The Easy distributor differs from any other vending machine thanks to the product being delivered in a transparent compartment, placed at the center of the window. This solution facilitates the withdrawal of products delivered through an automatic opening of the partition. Its location to ninety centimeters from the ground, designed for people with disabilities or mobility difficulties.

Suitable in particular for the sale of delicate products or the need for them to be delivered in a horizontal position.

The Easy is a vending machine that is convenient for your customers and for you. Does not require the client to bend down to pick it up the items, but delivers it at head height. In addition, the device offers a service that is unlimited, 24 hours, 7 days a week providing a quality service, equal to that in a store.

It can accommodate up to 1152 products distributed in a total of 8 floors.

In addition to providing a better mode of delivery, it also provides a of superior quality process for delivery, that's careful not to manipulate or flip the selected item. It can deliver even the most fragile and delicate item.

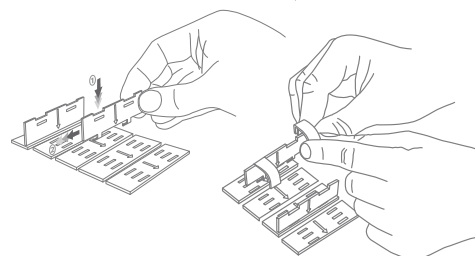
It is a machine equipped with the best technologies, such as LCD touch-screen dispenser transportation, loading, front / rear, electronic pricing display, innovative payment systems and intelligent elevator, to establish itself as the number one in its category.

Loading System Magex®

Maximum adaptability to distribute any type of product, you can pair more than one lane in an automatic way to distribute products that are wider. The system also allows the insertion of interlocking partitions to separate products that are next to one another from the next.

The system has a self-diagnosis system that checks the operating status of the lane before any disbursement of the product.

Patented VI2006A000275, VI2009A000079
VI2010A000343, VI2011A000026



Patent Pending WO2010/116395A1
US 2012/0104018A1
10717310.6

Ed. 4/2015

Boskant 16
B-2260 Westerlo
T. 0032(0) 14.54.97.25

F. 0032(0) 14.54.99.44
www.verbeek-westerlo.be
info@verbeek-westerlo.be

VERBEEK & ZN





Master Touch



Master



Slave



Length	1420 mm	1095 mm	920 mm
Depth	884 mm	884 mm	884 mm
Height	1990 mm	1990 mm	1990 mm
Weight (with 6 floors)	450 Kg	450 Kg	350 Kg
Maximum number of floors	8	8	8
Selection of floors	2 to 9	2 to 9	2 to 9
Type of lighting	High luminosity LED (20 W)	High luminosity LED (20 W)	High luminosity LED (20 W)
Voltage supply	100-240 V~ 50/60 Hz	100-240 V~ 50/60 Hz	100-240 V~ 50/60 Hz
Power consumption	75 W	75 W	75 W
Power consumption by cooling unit	420 W	420 W	
Climate class refrigeration unit	5	5	
Temperature control and cooling system	Electronic with alarm in real time	Electronic with alarm in real time	
Internal Temperature	2 °C	2 °C	
Operating Temperature of cooling unit	up to 40 °C	up to 40 °C	
Payment systems compatibility	MDB / CCTALK	MDB / CCTALK	

Technical specifications

- Distributor armored with double opening locks independent from the money holding area to the insertion of the money.
- The products displayed in the distributor are illuminated by high-efficiency LEDs.
- An elevator transports the selected product in the compartment for easy access.
- Restocking of products in the vending are facilitated by the extraction from the front or inside of the complete floors of the store via the sliding rails.
- Modular system, can be expanded at any time with additional slave machines.
- through an advanced Data Management, you have control over every single sale in real time via GPRS/3G technology.

Optionals

- Bill Reader
- Bill Validator with change
- Reader coins in tubes with change
- Reader coins with change multihopper
- Outdoor cover
- Lexan® protective
- LCD price display
- Lift
- Fridge
- System for managing variable weight
- Rear door for interior loading
- Inserting items via barcode
- Camera Kit
- Age verification

- Custom and personalized graphics
- GSM data management
- System RFID loyalty card
- Credit card and bank note reader

Colours



Service data in real time

Magex is able to provide all its customers a service for the management of vending machines in real time connected via Web technology, accessible from any system connected to the network. This allows you to view real-time data of each sale, the status of the stock, the coins / banknotes inserted or rendered, automatic rebooting in case of unplanned changes in the operation system, for example intrusion attempts. It also monitors the temperature and the evaporation inside the distributor with relative visualization of the details.

