

# VERBEEK

PROEF DE TECHNIEK



MADE IN ITALY



## Service data in real time

Magex is able to provide all its customers a service for the management of vending machines in real time connected via Web technology, accessible from any system connected to the network. This allows you to view real-time data of each sale, the status of the stock, the coins / banknotes inserted or rendered, automatic rebooting in case unplanned changes in the operation system, for example intrusion attempts. It also monitors the temperature and the evaporation inside the distributor with relative visualization of the details.

The most sold item, the right capacity for its size, 9 lanes per floor with a total of 1,260 products in 63 different variations /types. Ideal for installations "stand alone".

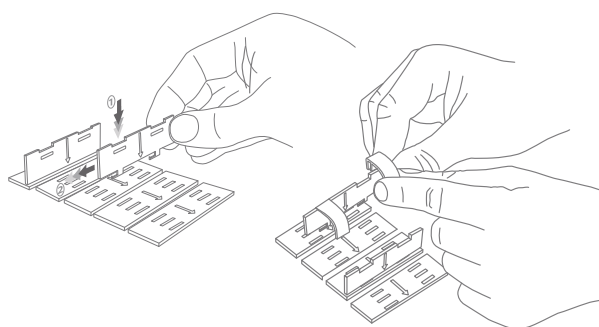
Possibility to refrigerate.

## Loading System Magex®

Maximum adaptability to distribute any type of product, you can pair more than one lane in an automatic way to distribute products that are wider. The system also allows the insertion of interlocking partitions to separate products that are next to one another from the next.

The system has a self-diagnosis system that checks the operating status of the lane before any disbursement of the product.

Patented VI2006A000275, VI2009A000079  
VI2010A000343, VI2011A000026



Patent Pending WO2010/116395A1  
US 2012/0104018A1  
10717310.6

Ed. 5/2014

Boskant 16  
B-2260 Westerlo  
T. 0032(0) 14.54.97.25

F. 0032(0) 14.54.99.44  
www.verbeek-westerlo.be  
info@verbeek-westerlo.be

VERBEEK & ZN



# Shop24<sup>evo</sup>

## Evo

Master



Slave



Console



Length	1126 mm	921 mm	545 mm / +300 mm
Depth	884 mm	884 mm	884 mm
Height	1880 mm	1880 mm	1880 mm
Weight (with 6 floors)	450 Kg	350 Kg	+ 60 Kg
Maximum number of floors	7	7	-
Selection of floors	2 to 9	2 to 9	-
Type of lighting	High luminosity LED (20 W)	High luminosity LED (20 W)	-
Voltage supply	100-240 V~ 50/60 Hz	100-240 V~ 50/60 Hz	100-240 V~ 50/60 Hz
Power consumption	75 W	75 W	+130 W
Power consumption by cooling unit	420 W	420 W	-
Climate class refrigeration unit	5	5	-
Temperature control and cooling system	Electronic with alarm in real time	Electronic with alarm in real time	-
Internal Temperature	2 °C	2 °C	-
Operating Temperature of cooling unit	up to 40 °C	up to 40 °C	-
Payment systems compatibility	MDB / CCTALK	-	-

### Technical specifications

- Distributor armored with double opening locks independent from the money holding area to the insertion of the money.
- The products displayed in the distributor are illuminated by high-efficiency LEDs.
- An elevator transports the selected product in the compartment for easy access.
- Restocking of products in the vending are facilitated by the extraction from the front or inside of the complete floors of the store via the sliding rails.
- Modular system, can be expanded at any time with additional slave machines.
- through and advanced Data Management, you have control over every single sale in real time via GPRS/3G technology.

### Optionals

- Bill Reader
- Bill Validator with change
- Reader coins in tubes with change
- Reader coins with change multihopper
- Outdoor cover
- Lexan® protective
- LCD price display
- Lift
- Fridge
- System for managing variable weight
- Rear door for interior loading
- Inserting items via barcode
- Camera Kit
- Age verification
- Custom and personalized graphics
- GSM data management
- System RFID loyalty card
- Credit card and bank note reader

### Colours

